



Community Based Care of Brevard

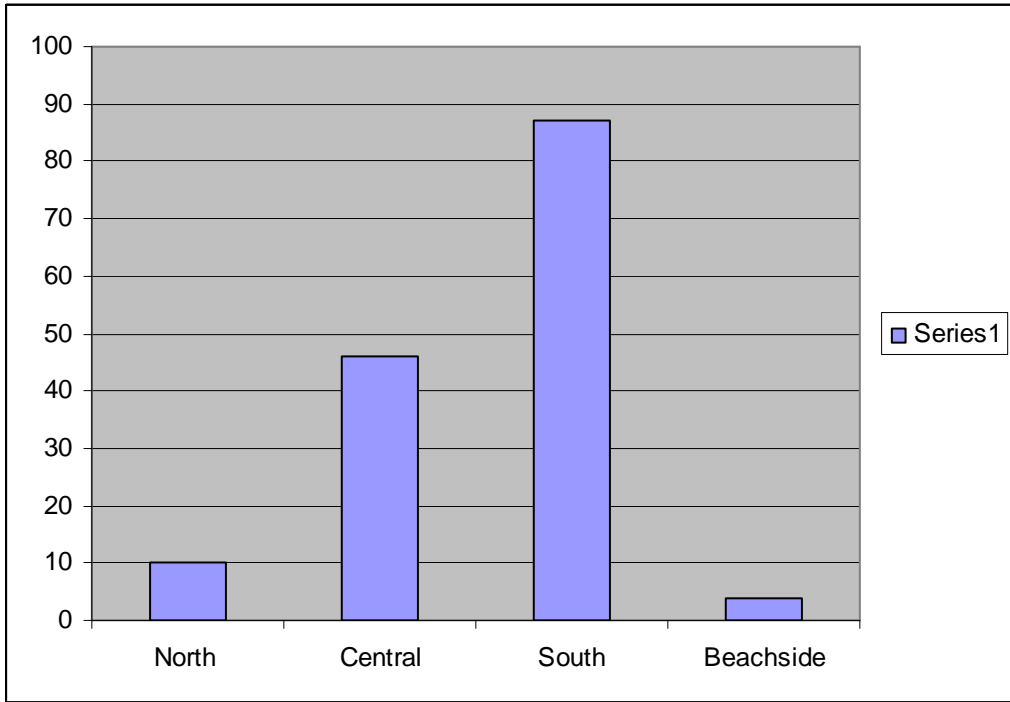


Foster Care Recruitment Plan 2009

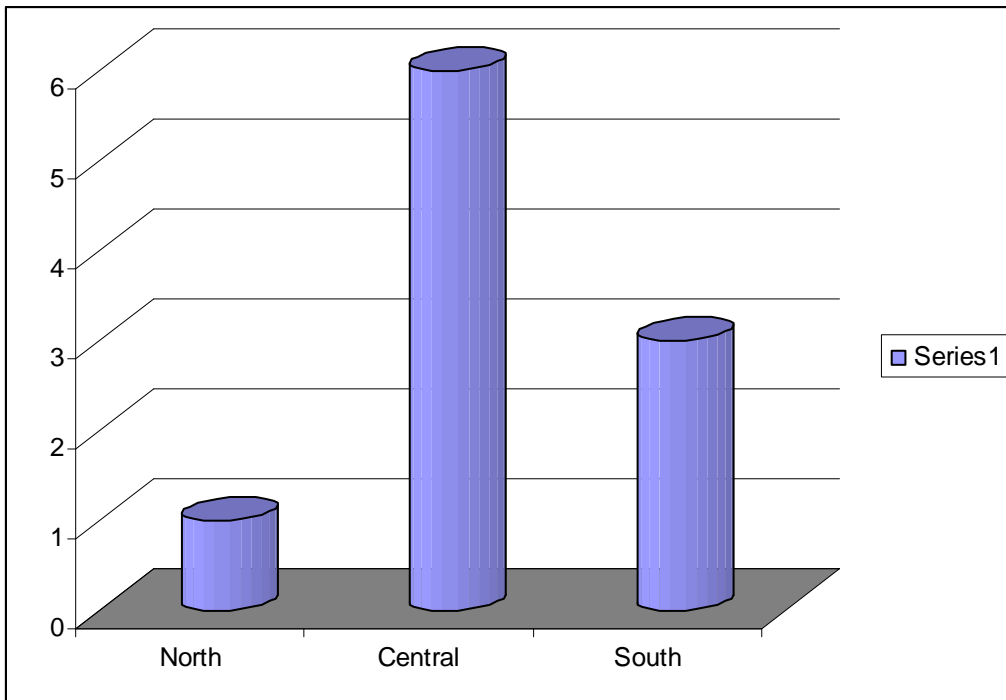
A. Range of Services: Community Based Care of Brevard (CBCB) manages a network of six Child Placing Agencies responsible for the initial license, re licensure activities and day to day management of family foster homes. Family foster homes are licensed through the Florida Department of Children and Families (DCF), governed by Florida Administrative Code 65C 13, 14 and 15. CBCB reviews all licensure packets before submission to DCF to ensure compliance with licensing standards and protocols. Currently, homes can choose to receive specialized training to serve children beyond a traditional level of placement. CBCB offers two levels of enhanced foster care; (Connections and Passages) and Specialized Therapeutic Levels 1 and 2 are contracted through the Child Welfare Pre Paid Mental Health plan. Becoming a medical foster home is an option under the umbrella of Children’s Medical Services.

B. Data Trends (Reference Charts 1.1-1.9): As of February 2009, there are 137 family foster homes licensed in Brevard County. It is important to note that this is a fluid number that fluctuates daily based on new homes becoming licensed and other homes closing. The Southern area of Brevard County is heavily populated with family foster homes (87) followed by a moderately populated Central region (33) with very few homes in the Northern part of the county (10) and “beachside community” (4). Most of the children who experience a removal episode and are placed in licensed out of home care are from the Central part of the county. An emphasis has been given to same school placement (as the area of removal) for continuity of care and to reduce trauma associated with biological family separation. The majority of group homes are in the Central part of Brevard County. Ninety percent of the youth placed in group homes are between the ages of 13 and 17 years old. There is almost an even split in gender with 49% being female and 51% male. CBCB has successfully reduced the group home population in half since 2004. There are additional endeavors to continue to reduce the group home population to only those that require *specialized therapeutic group care* versus traditional group care. There are 43 children residing in group homes. There are currently 226 children residing in licensed out of home care. The majority of children reside in family foster homes in some form of therapeutic foster care.

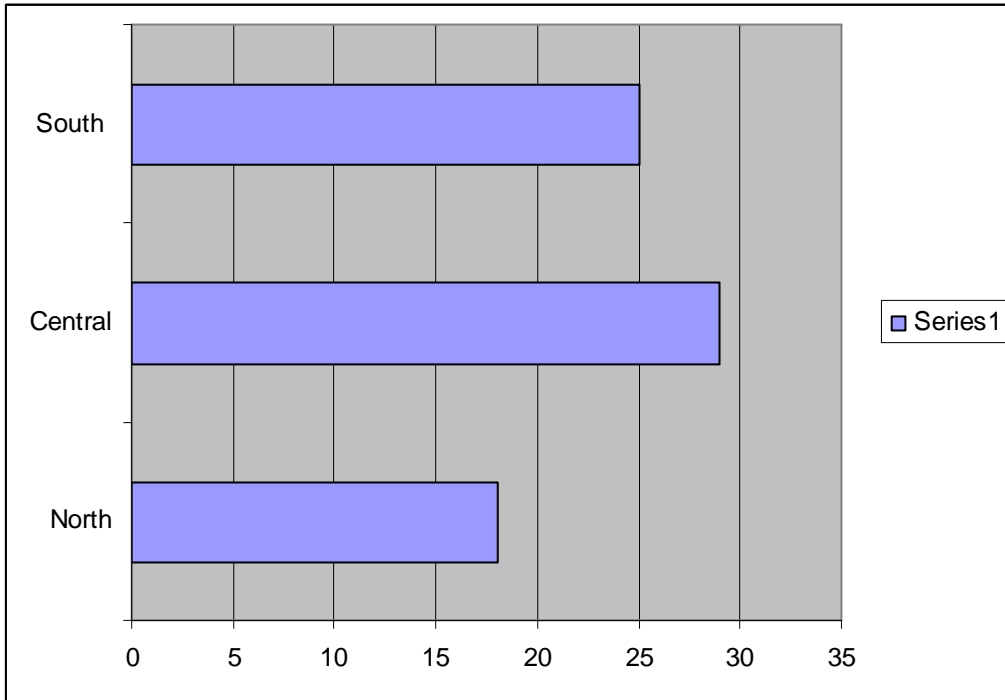
1.1 Location of Brevard County Family Foster Homes



1.1 A. Location of Brevard County Group Homes

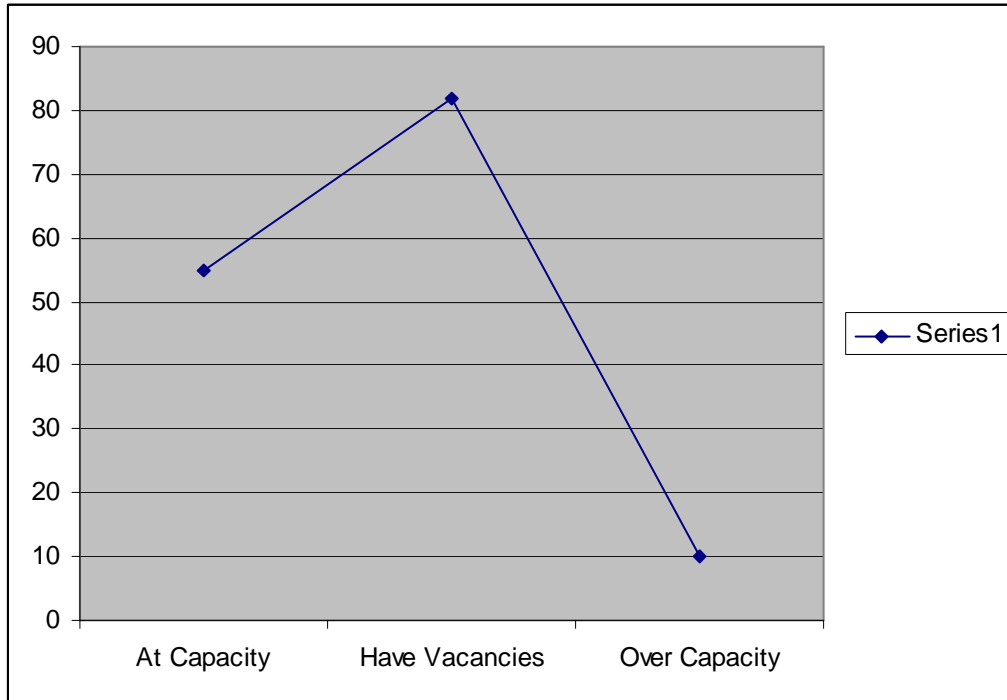


1.2 Frequency of Abuse Reports by Zip Code

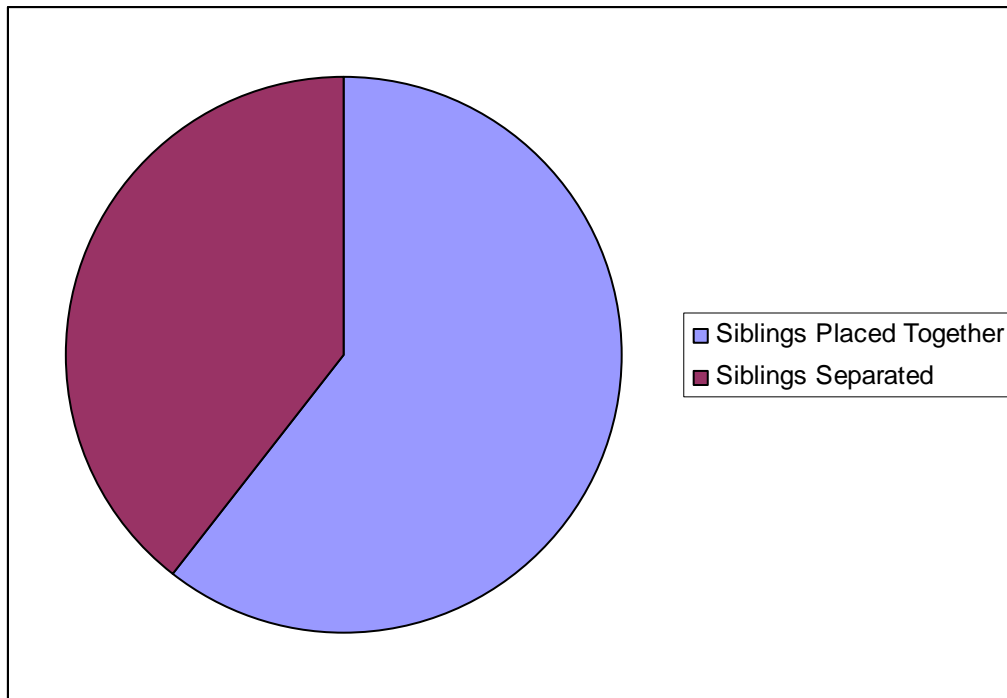


Of the 137 homes, approximately 55 are at full capacity while 82 homes have some sort of vacancy. Ten homes are on an approved over capacity waiver to accommodate sibling groups, special medical conditions or due to a prior relationship existing from a previous removal episode. Twenty sibling groups are placed together while 13 are separated.

1.3 Capacity of Family Foster Homes



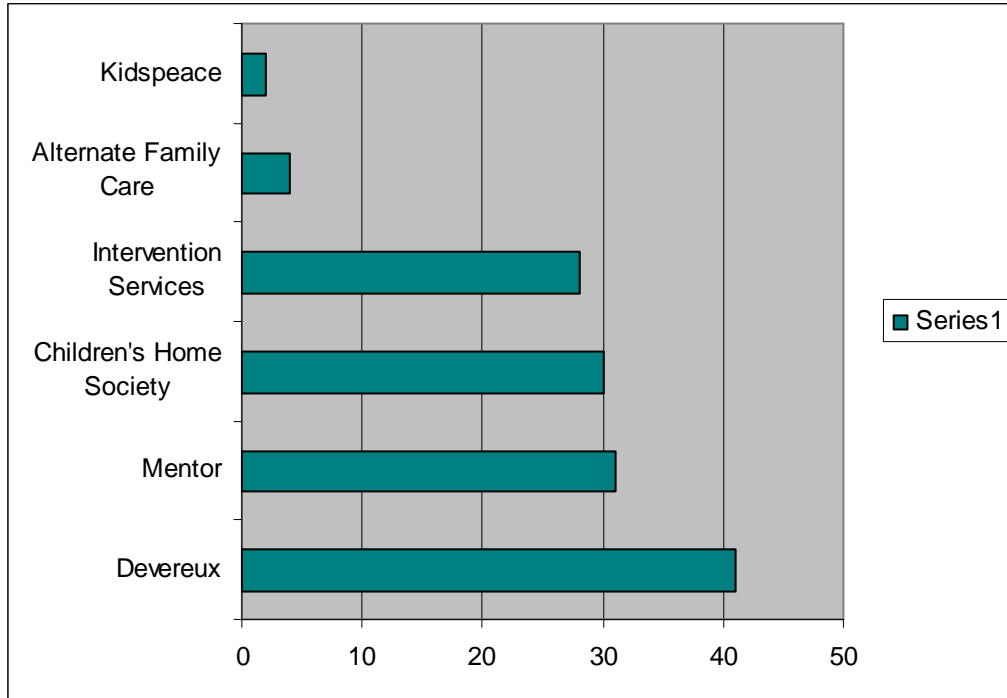
1.4 Siblings Groups



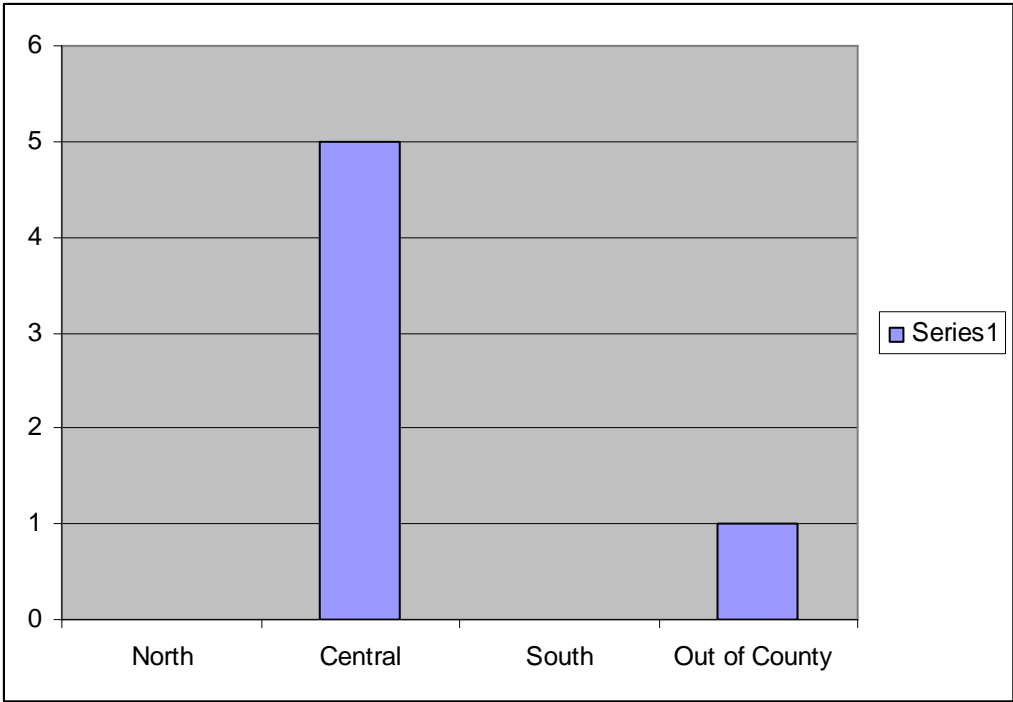
Of the 6 Child Placing Agencies, Devereux manages the largest amount of homes with Children's Home Society, Intervention Services and Mentor lagging

closely behind. Kidpeace, a new provider in the area, has only two homes while Alternative Family Care manages four homes. All Child Placing Agencies are located in the Central part of the county with the exception of Kidspeace, which is located out of Brevard County.

1.5 Breakdown of Family Foster Homes by Child Placing Agency

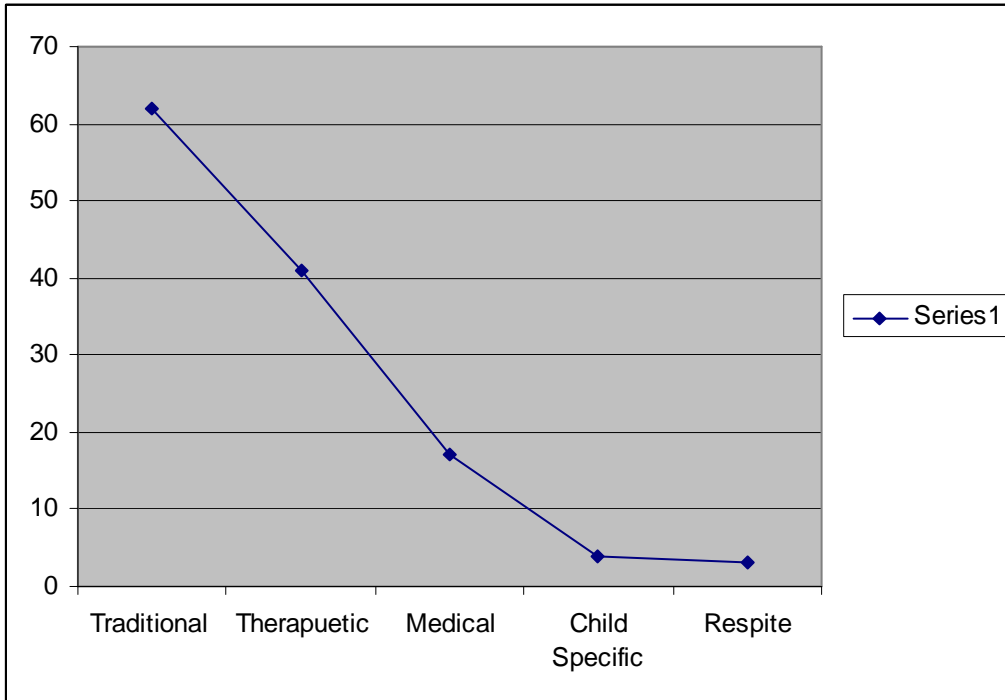


1.6 Geographic Access of Child Placing Agencies

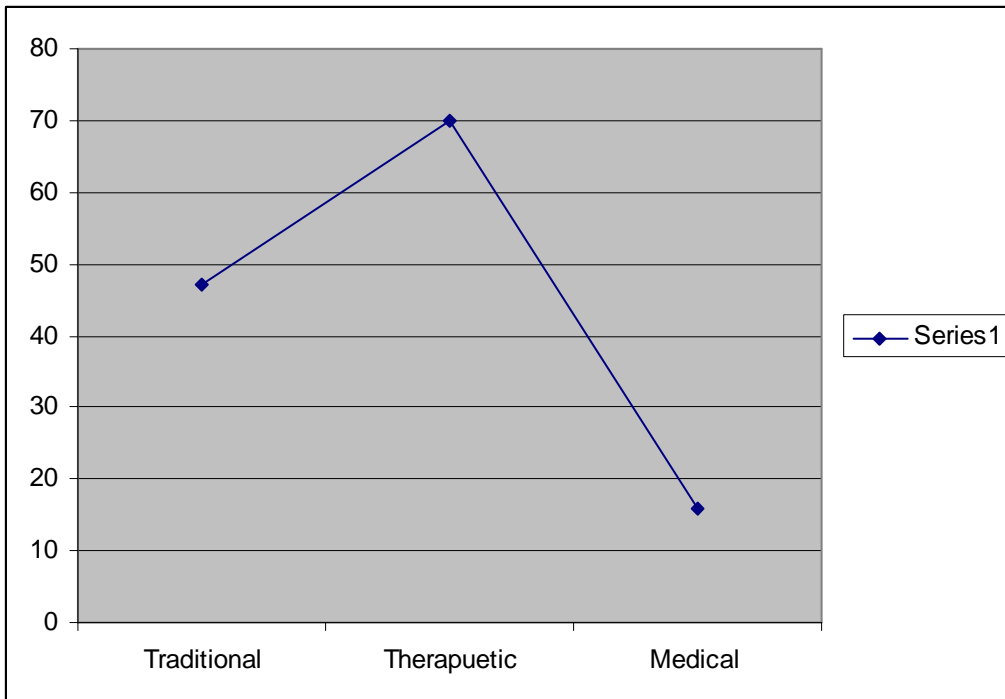


Approximately 62 of the beds available in Brevard County are traditional while 40 are therapeutic. When compared with actual placements, more children are placed in some type of therapeutic home versus a traditional home. There are almost an equivalent number of children placed in medical homes as is capacity of medical homes.

1.7 Types of Beds of Family Foster Homes



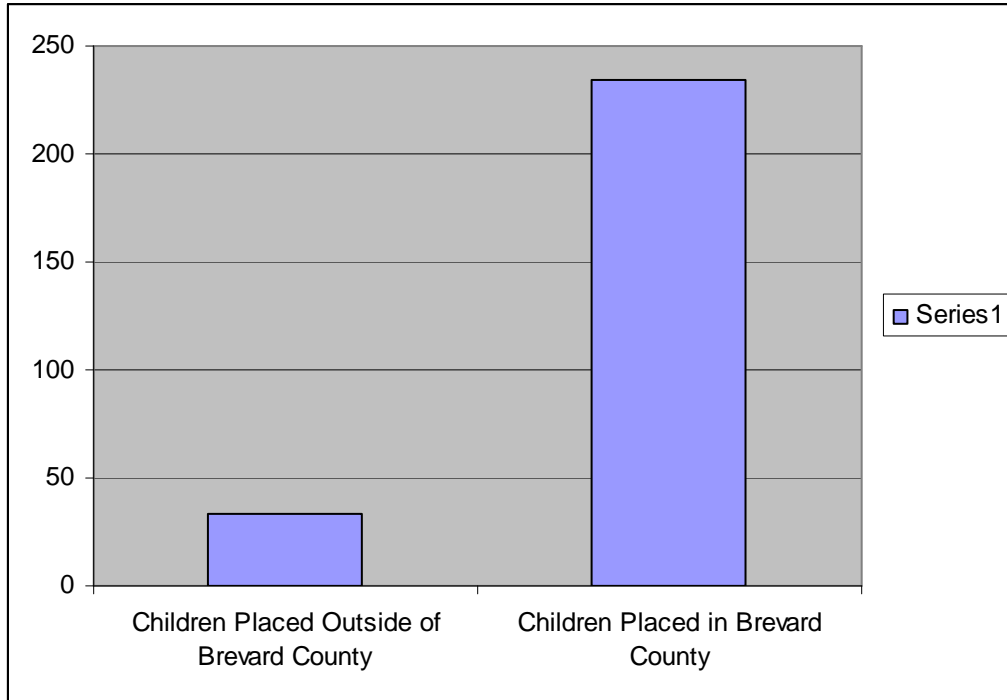
1.8 Frequency of placement level by child



Thirty three children are placed outside of Brevard County primarily in specialized setting that are not available within the county (examples are Agency for Persons

with Disabilities Group Home, Specialized Therapeutic Group Homes or Department of Juvenile Justice Facilities.)

1.9 In County Versus Out of County Placements



C. Demographics of Foster Parents: CBCB conducts an analysis annually of foster parent demographic information. The next analysis will occur in May of 2009. The following foster parent demographic information was collected in May of 2008:

Demographics	
Ages of Foster Parents and Gender	Number of individuals
Up to 35 years old	19
Aged 36-50 years old	107
Aged 51-65 years old	72
Aged 66-80 years old	21
Aged 80 and older	1
Male	60
Female	160
Length of time as a Foster Parent (Per Home)	
Less than one year	43
1-5 years	109
6-10 years	38
11 years or more	11
Family Composition (Per Home)	
No children currently in the home	26

1 child currently in the home	25
2 children currently in the home	15
3 children currently in the home	11
4 children currently in the home	10
5 or more children currently in the home	2
Families who have adopted	32
Families with adult children	27
Number of Families with extended family members	7

**Note that families can be in more than one category for area of Family Composition*

Occupations

Stay at home parent	41
Retired	29
Self Employed	9
Professional, Requires College Degree	61
Vocational Trade or Craft	80

Characteristics of Successful Foster Parents

- Married Couple
- Between ages of 36 and 50
- Employed outside the home
- Experienced in foster care and/or adoptions
- Non Discriminatory to sex, age, or race of foster child
- Help biological families after reunification
- Supportive of sibling groups
- Have experience in fostering

**CBCB did not obtain demographics on major religious groups. These measures will be included in the next data analysis.*

C1. Demographics of Children in Licensed Care: CBCB conducts an analysis annually of children in licensed care. The next analysis will occur in May of 2009. The following demographic information was collected in May of 2008:

Age of Children in Licensed Care

Aged 0-5	70
Aged 6-11	42
Aged 12-17	125

Gender of Children in Licensed Care

Male	103
Female	134

Racial/Ethnic Composition

African American	84
White (Non Hispanic Latino)	153

**CBCB did not measure any other racial/ethnic composition other than African American and White (Non Hispanic Latino) and did not include major religious groups. These measures will be included in the next data analysis.*

D. Analysis of Needs, Projected Trends and Implication of Data:

The licensed out of home care population has remained fairly constant during the period of February 2008 through February 2009 with approximately 226-237 children in licensed out of home care. While there are a sufficient number of beds to meet this capacity requirement, (137 homes or 290 beds), the types of beds available do not meet current utilization needs (i.e. more traditional beds open, yet there is higher demand for therapeutic beds). There are not sufficient beds that specialize in sibling groups as evidenced by at least 13 sets of siblings separated in licensed care. Also, as CBCB moves toward the elimination of congregate care (or “group home” placement settings) additional homes that are prepared to accept teens with co occurring disorders will be needed. This should include youth that are cross system involved with the child welfare and juvenile justice system whom may also have mental health issues. While the area of medical foster homes has nearly tripled in the last three years; the number of homes is just meeting placement demand. If there is an influx in medically complicated children, a lack of homes could force out of county placement. As CBCB embraces the same school zone placement a sufficient number of homes will need to be available throughout the entire county. It should also be noted that there is a statewide initiative and vision to reduce the foster care population by 50% percent by the year 2010 (through additional front end services and intervention.)

E. Recommendations:

The data does not support general recruitment of foster homes that is not specific to identified client population. CBCB should educate contracted Child Placing Agencies and foster parents about the utilization needs of the children *entering licensed care*. Specialized therapeutic training should be available to experienced foster parents who desire additional certifications and credentials to serve diverse groups of children (other than traditional.) CBCB is also moving towards a continuum of training in various levels to cater to child specific needs. (Homes could receive the highest level of therapeutic training and still be available to serve traditional children.) It should be clearly communicated that CBCB desires to increase the incidence of siblings placed together in family foster homes, increase availability of family foster homes for teens between aged 13 and 17, increase the number of homes that can accept therapeutic children, increase children placed in same school zone as removal and expand homes with medical training. Targeted recruitment efforts should focus on the North and Central parts of the county and other specialized areas such as the “beachside community.” Since all Child Placing Agencies are located in the Central part of the county, agencies should consider co locating with other community based

organizations to increase outreach efforts and accessibility. CBCB should continue to gauge those characteristics of successful foster parents and track foster home closures. Face to face meetings with foster parents for closing interview should also be conducted. This feedback will be taken into consideration for the continuation or discontinuation of certain processes. Resources should be allocated according to these needs.

F. Overall mechanisms for the evaluation of success in implementing new and existing recruitment and support systems: CBCB will conduct another full data analysis “moment in time” in May of 2009 to determine status. CBC of Brevard should begin to implement the above strategies and promising techniques timely.