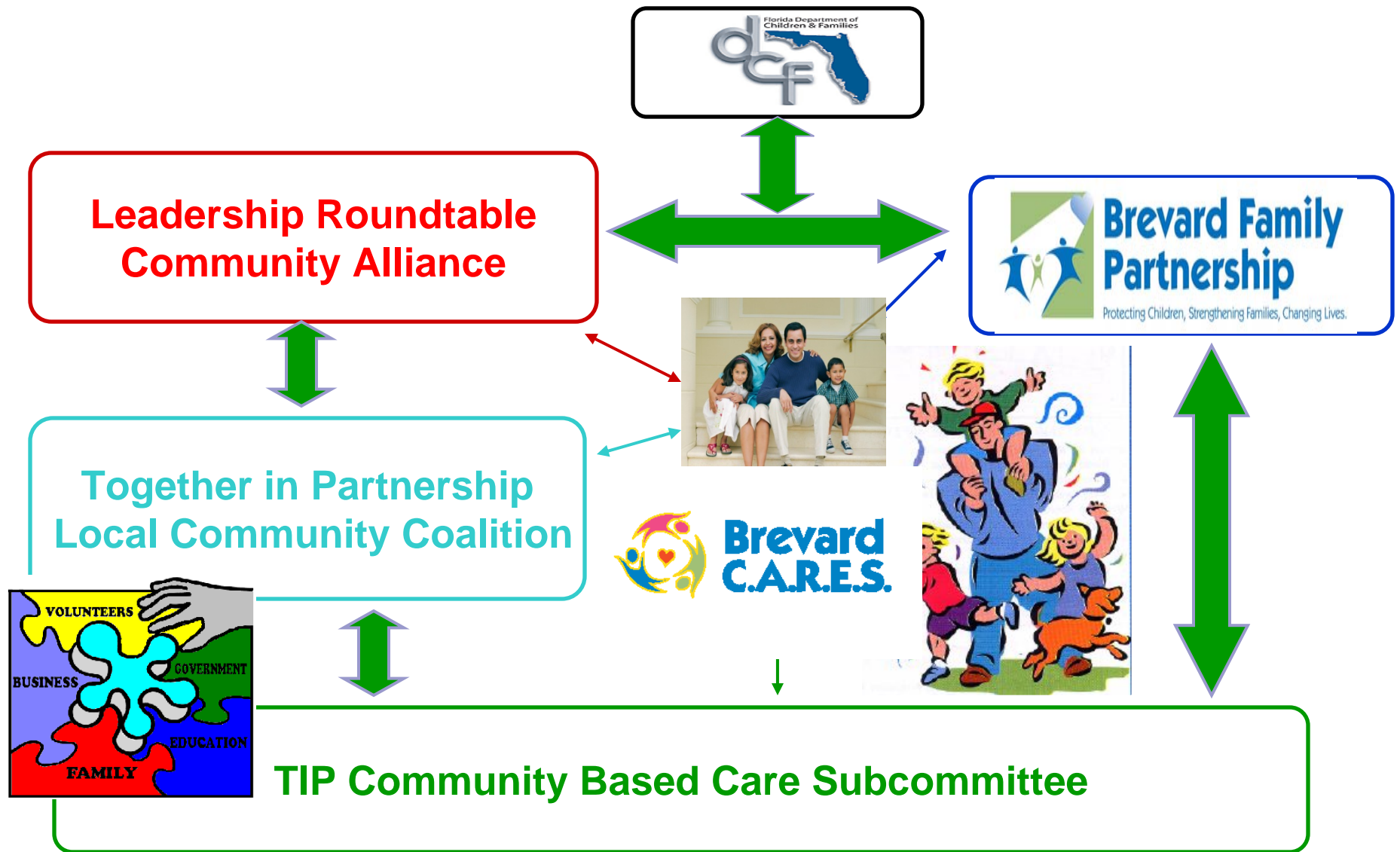




IVE Waiver Reinvestment Data: April 2010

BREVARD COMMUNITY PARTNERSHIP



Community Coalition (TIP) Priorities

- Front End Prevention & Diversion:
 - Brevard C.A.R.E.S.
- Caseload Ratio Below 1-20
- Family-Centered Practice
- Family Team Conferencing
- Mobile Response



Systemic Changes

- ♥ Community driven
- ♥ Front-end prevention
- ♥ Family and youth as partners
- ♥ Consumer councils and voice at all levels
- ♥ “Got Love?” anti-stigma campaign
- ♥ Centralized intake
- ♥ 24/7 mobile response
- ♥ Family-centered practice
- ♥ Wraparound & FTC
- ♥ Continuum of care from entry to exit
- ♥ Flex funds to address basic needs



System of Care Values and Principles

- ♥ Strength Based
- ♥ Family Centered
- ♥ Individualized
- ♥ Community Focused
- ♥ Whatever it Takes Approach
- ♥ Team Driven
- ♥ Outcome Oriented
- ♥ Least Restrictive & Intrusive
- ♥ Culturally Competent
- ♥ Natural Resources and Supports





Anti-stigma Campaign

- Strategic effort to de-stigmatize child welfare system
- More “family friendly” ***its okay to ask for help!!***
- Community wide branding and marketing campaign
- *Create a separate identity from formal child welfare system*
- Engage and educate all potential referral sources

Primary Prevention: Brevard C.A.R.E.S.

Anti-Stigma Campaign

- Coordination
- Advocacy
- Resources
- Education
- Support

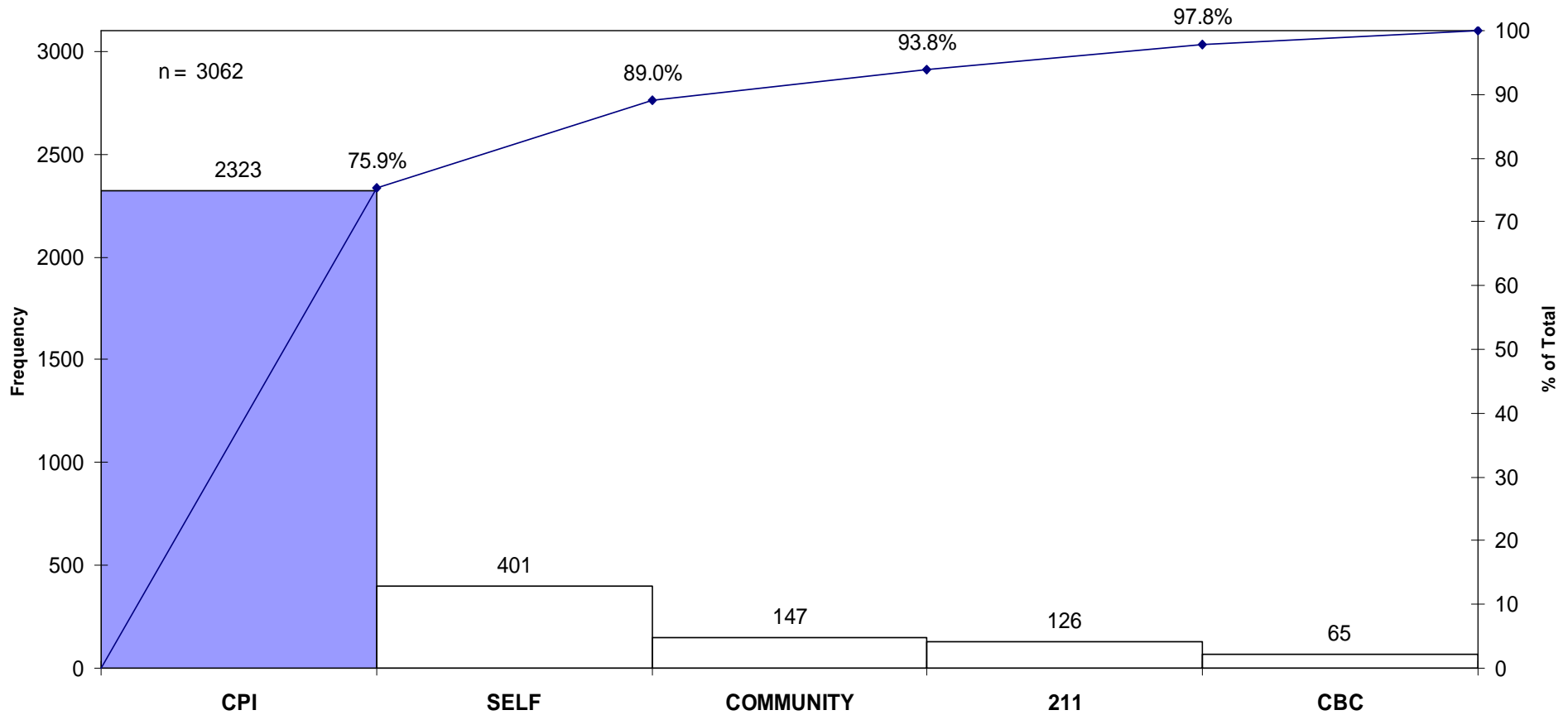




Brevard C.A.R.E.S.

- County-wide prevention program
- Diverts families from entering child welfare system
- Provides support and services to families who are experiencing stress
- Easily accessible Family Resource Center
- Utilizes Wraparound Family Team Conferencing Process
- Creates community linkages for families

Referral Source to Brevard C.A.R.E.S. August 2005 through February 2010



Referrals to Brevard CARES by Source August 2005-February 2010

Brevard C.A.R.E.S. Overview

- 1-888-CARES-09
- Single Point of Access
- Access to Mobile Response
- Immediate Access to Services
- Available 24/7 to Community
- Flexible Funding for Basic Needs
- Short term Care Management
- Wraparound Family Team Conferencing





Flexible Support & Unbundling Services

- ♥ Eliminates duplication & maximizes efficiencies
- ♥ Affords same array of services available to child welfare recipients to those being served through prevention efforts.
- ♥ Customizes services to meet the unique needs of the youth and families
- ♥ Creates a menu of needed services and ability to capacity build.
- ♥ Maximizes revenue
- ♥ Authorizes services based on needs and acuity of the family
- ♥ Flex and tailors the provision of services to the changing needs of the family



Flexible Supports

- ♥ Assessments and Evaluations
- ♥ After School Care
- ♥ Camps
- ♥ Child care
- ♥ Clinical Consultations
- ♥ Crisis Intervention
- ♥ DBT
- ♥ Diversion & Coordination of Services
- ♥ Domestic Violence Advocacy
- ♥ Domestic Violence Services
- ♥ Educational Stabilization
- ♥ Family Therapy
- ♥ Flex Funding
- ♥ Housing and Employment Assistance
- ♥ Intensive Family Services
- ♥ Individual Therapy
- ♥ Mentor Services
- ♥ Mobile Response
- ♥ Outreach to Families
- ♥ Parenting Groups
- ♥ Parent Support and Advocacy
- ♥ Post-Adoption Support
- ♥ Respite
- ♥ Relative/non-relative support
- ♥ Social Skills Building Groups
- ♥ Specialized After School Programs
- ♥ Substance Abuse Counseling
- ♥ Therapeutic Groups
- ♥ Tracking and Mentoring
- ♥ Trauma/Recovery Services
- ♥ Visitation



Wraparound Outcomes/Long Term Benefits

- Reduced Recidivism
- Improved Family Functioning
- Improved School Functioning
- Families learn to navigate complex systems
- Paid services are short term/create unnatural dependency while natural supports are available long term



Brevard C.A.R.E.S. Outcomes

- 6,854 children have been diverted from entering the child welfare system to date
- The dependency census has decreased by 50 %.
- An average of over 600 children are served at any given time (746 served in February of 2010)



Brevard C.A.R.E.S. Outcomes

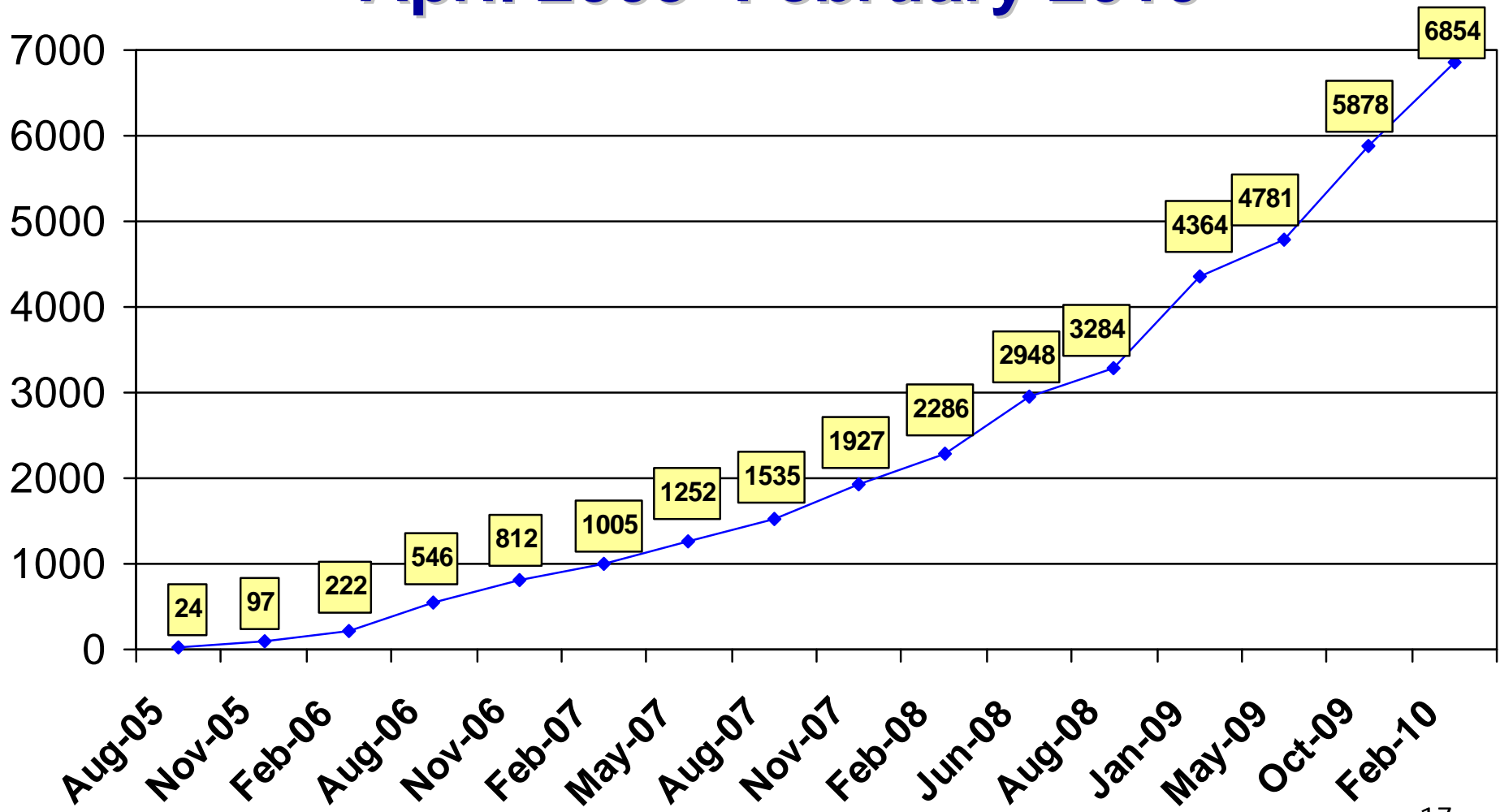
- 13.5% of families self-refer
- 8.9% of referrals come from the community and 211
- The average duration of services is 167 days for the families who successfully complete the program



Brevard C.A.R.E.S. Outcomes

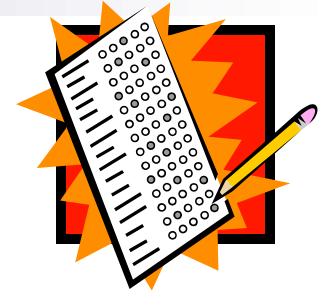
- 99% of families served engage in Family Team Conferencing
- The average monthly per child cost of operating the wraparound program is approximately \$184.00 or just over \$6.00 a day. (all children open to CARES in FY 08-09)

Unduplicated Number of Children Referred to Brevard C.A.R.E.S. – April 2005- February 2010



FTC Survey Results

FY 08-09



Q-1

- 358 Surveys completed by 260 family members, 16 natural supports & 82 providers

Q-2

- 118 Surveys completed by 86 family members, 5 natural supports & 27 providers

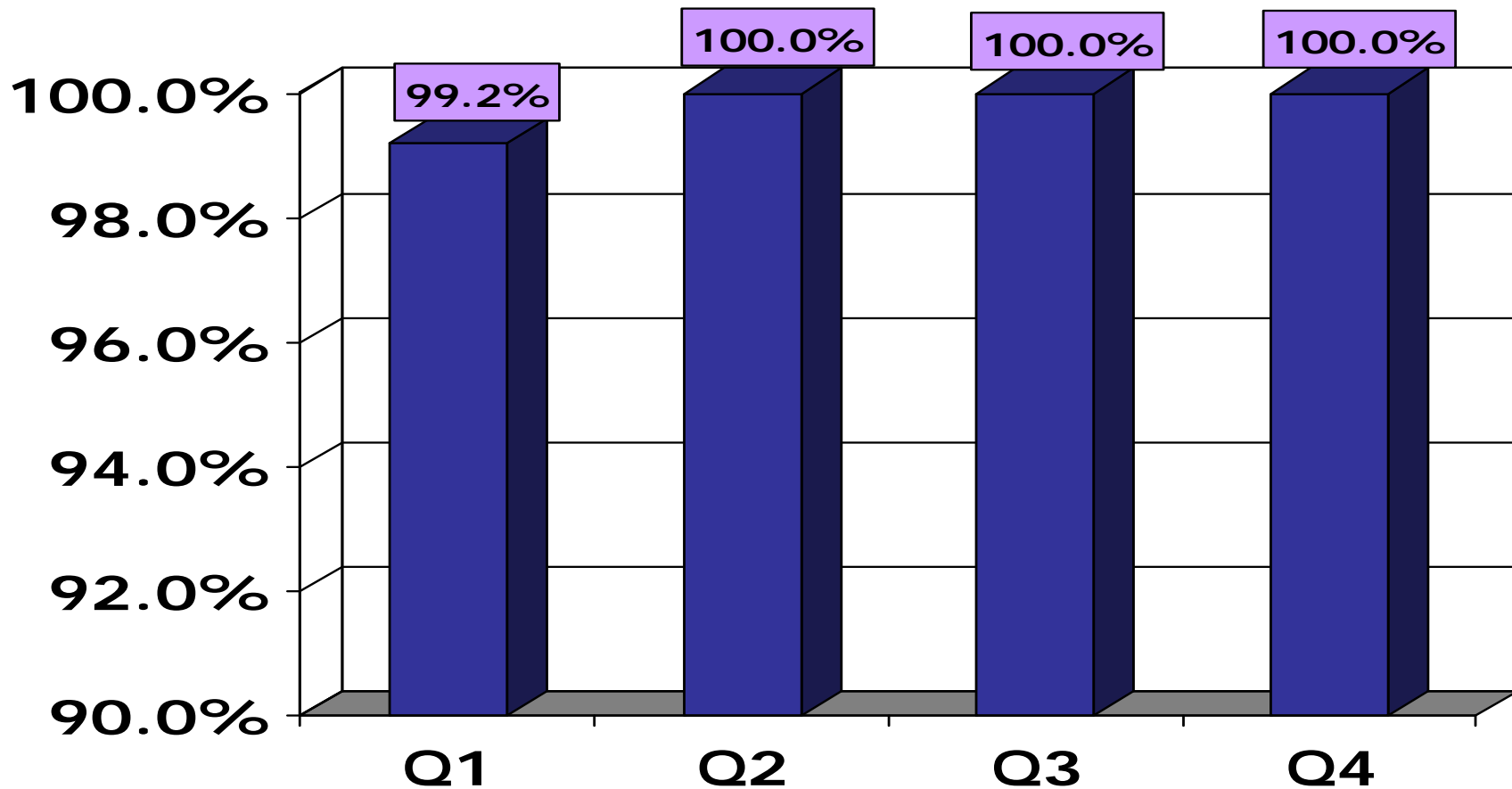
Q-3

- 79 Surveys completed by 68 family members, 7 natural supports & 4 providers

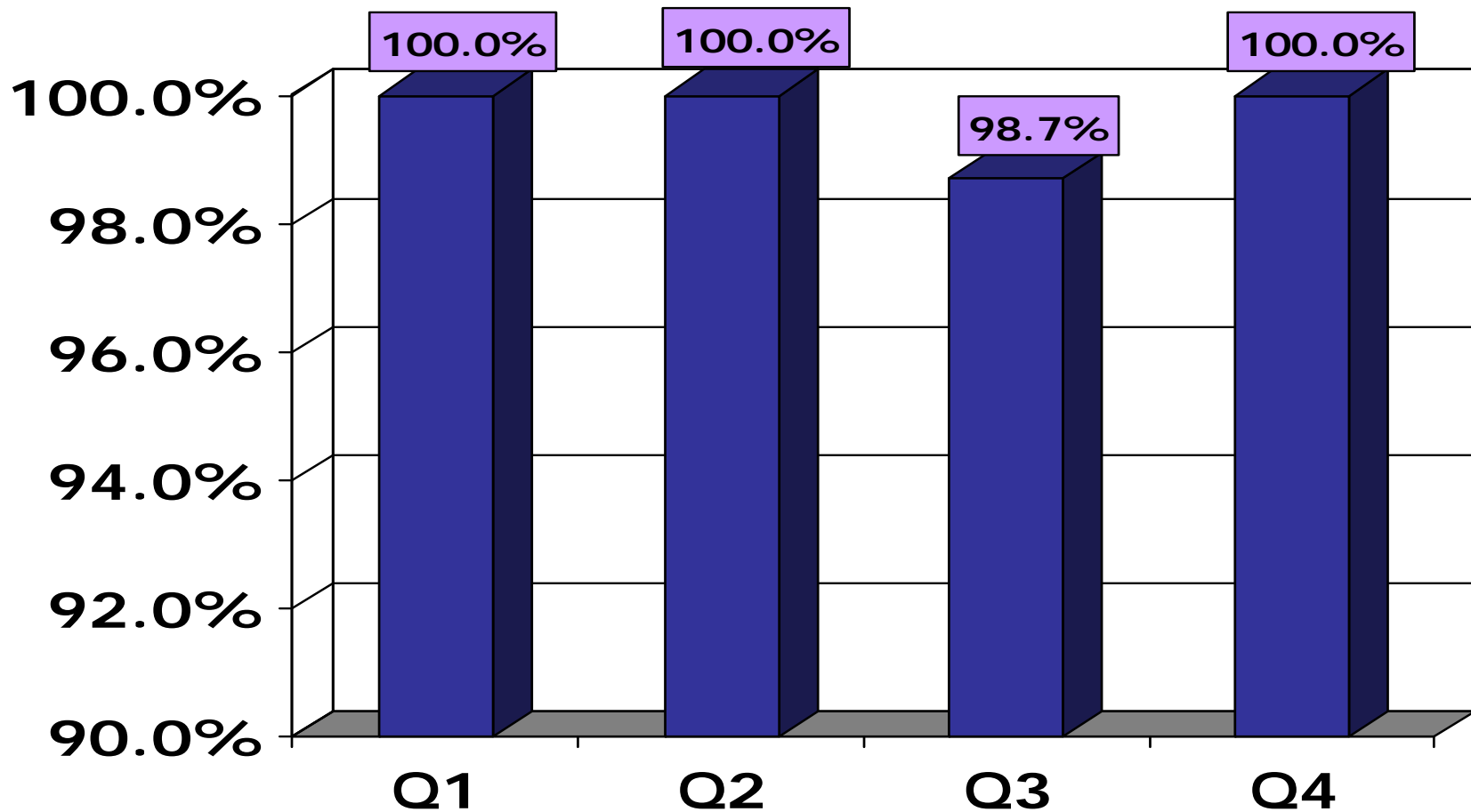
Q-4

- 62 Surveys completed by 62 family members, 6 natural supports & 4 providers

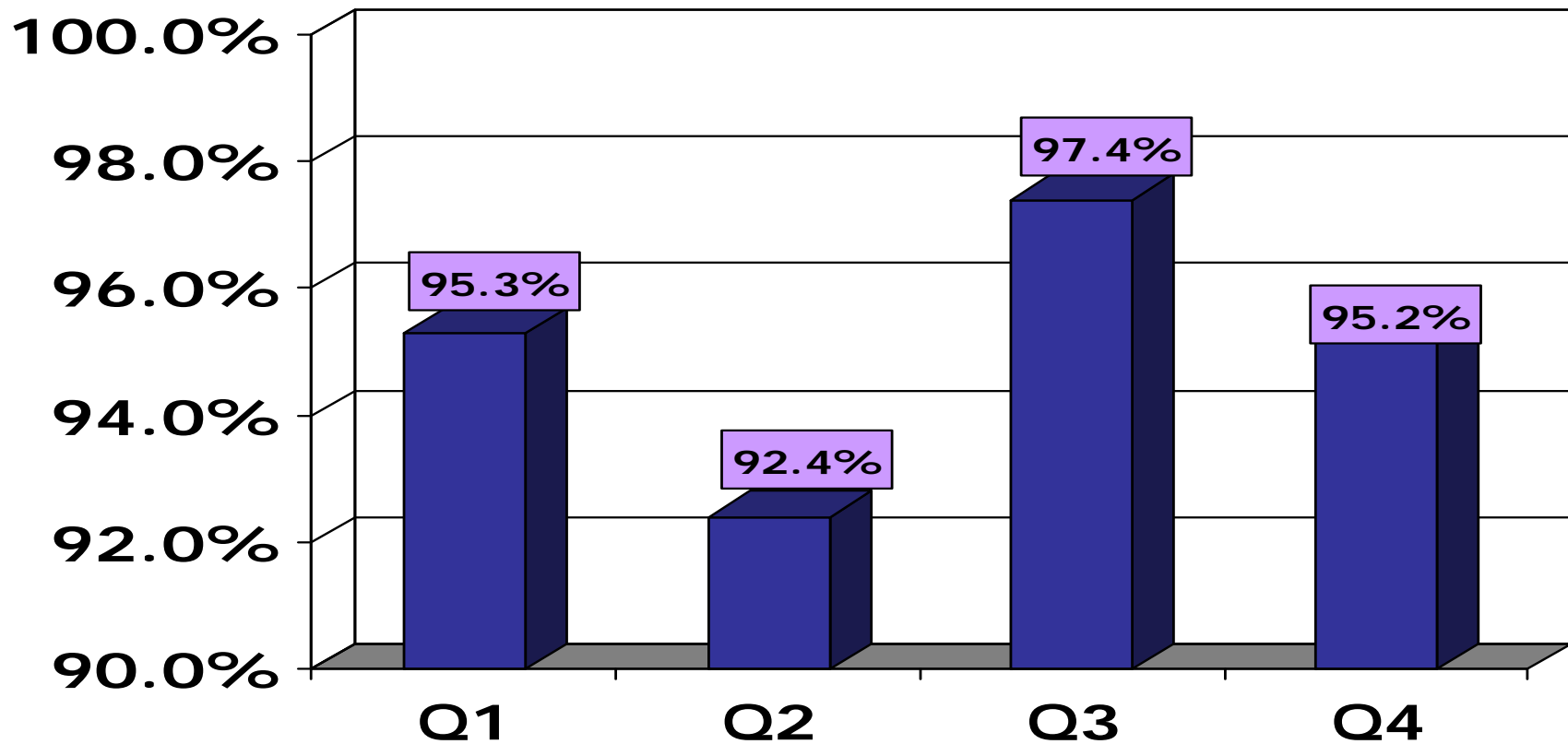
Did You Feel the Family Team Conference Focused on the Families Strengths?



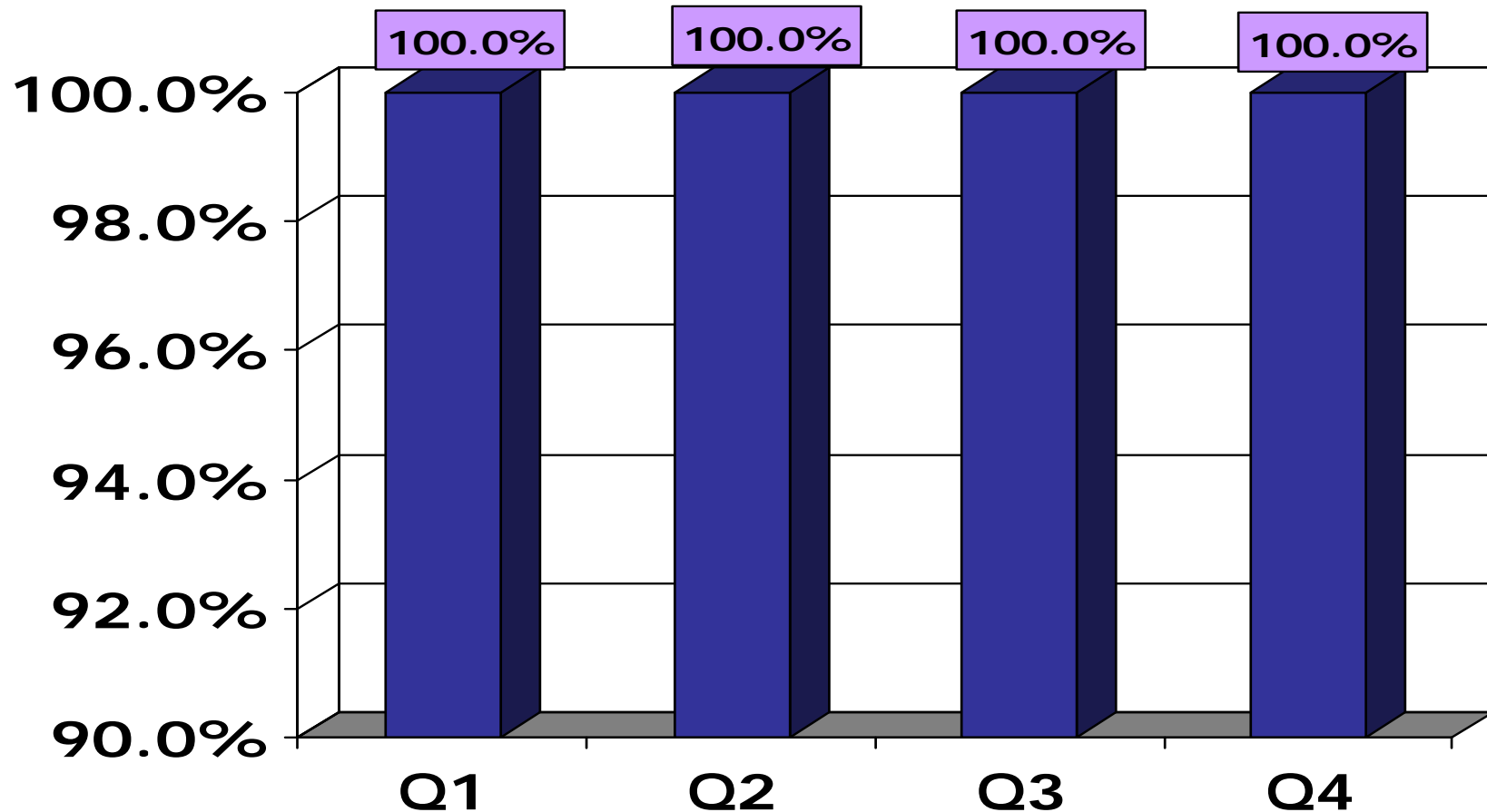
During the Family Team Conference Did You Feel You Had an Equal Voice in Developing Your Plan?



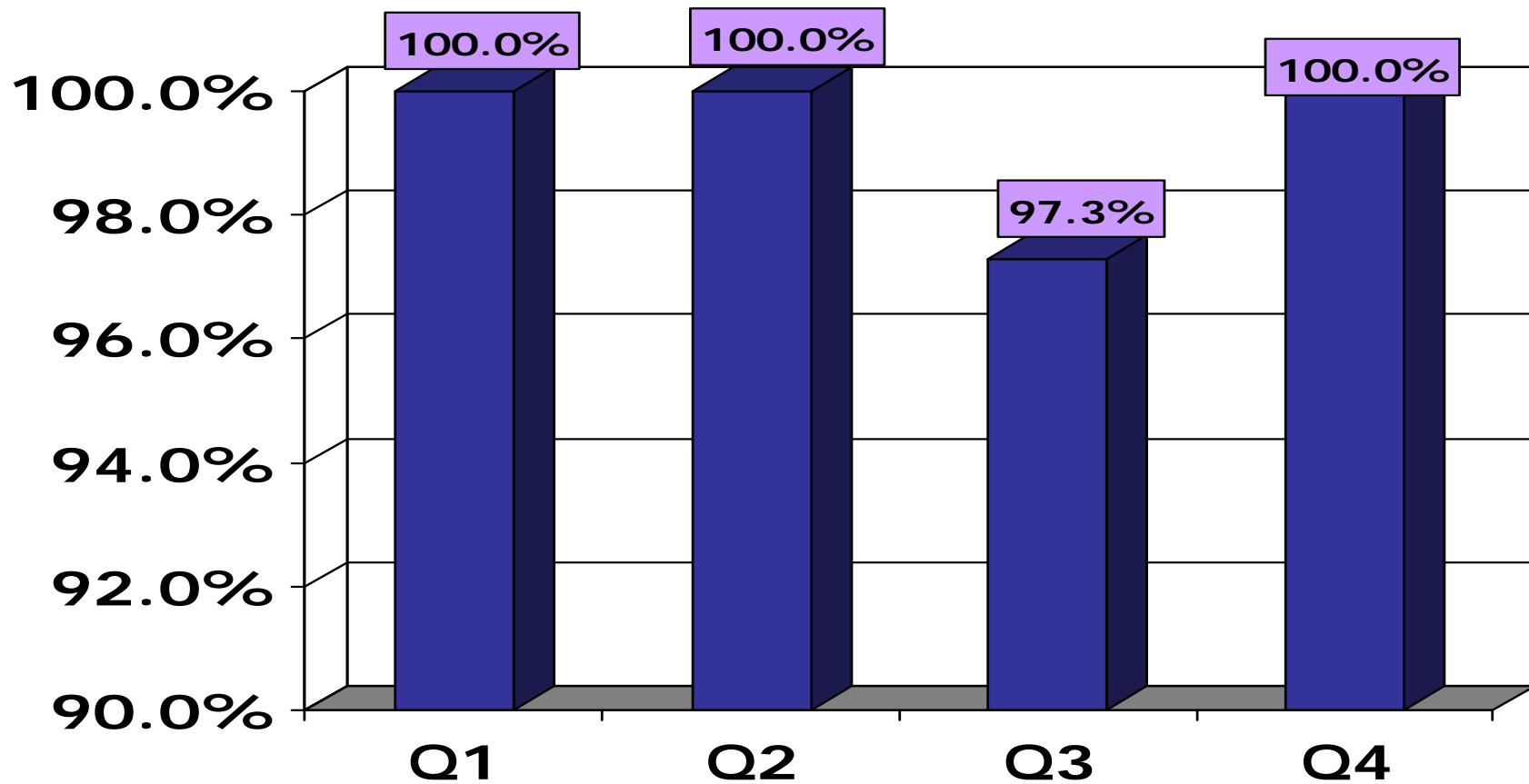
Were the People That You Wanted Present at the FTC in Attendance?



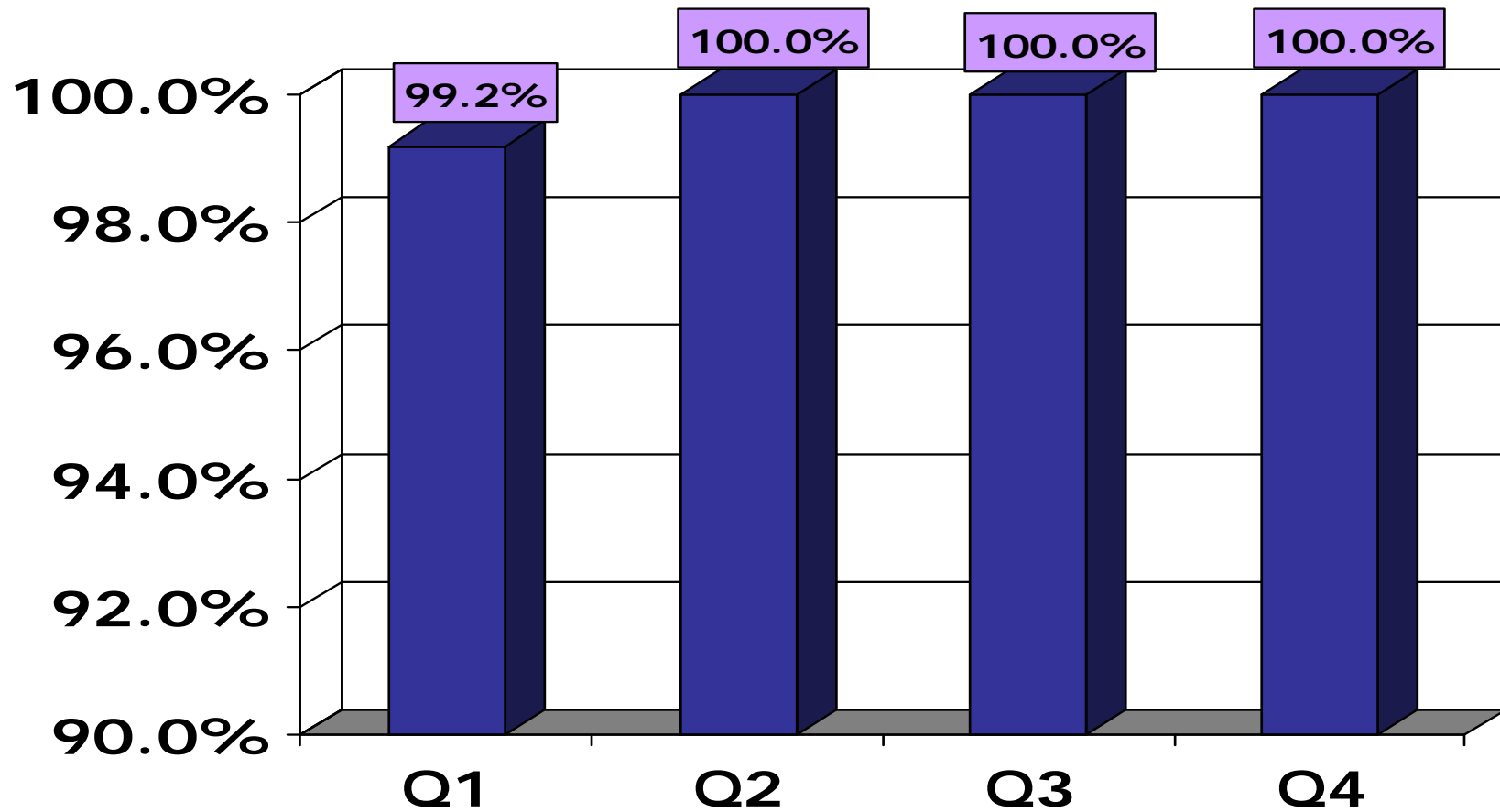
Did You Feel the Team Was Supportive of Your Needs & Goals?



Was the Team Meeting Scheduled at a Time That was Convenient for the Family?



Overall, How Satisfied Were You With Your Family Team Conference?



% Very Satisfied or Satisfied

Recidivism Data

Good News



- ♥ 90% of families who successfully completed the program remain intact at the 6-month follow up.
- ♥ 93% of families who successfully completed the program remain intact at the 12-month follow up.

**Intact defined as no verified findings or indicators of abuse upon follow up*

Safer Children and Communities With Cost Benefits



Abuse Reports Received

FY 04-05 - FY 08-09

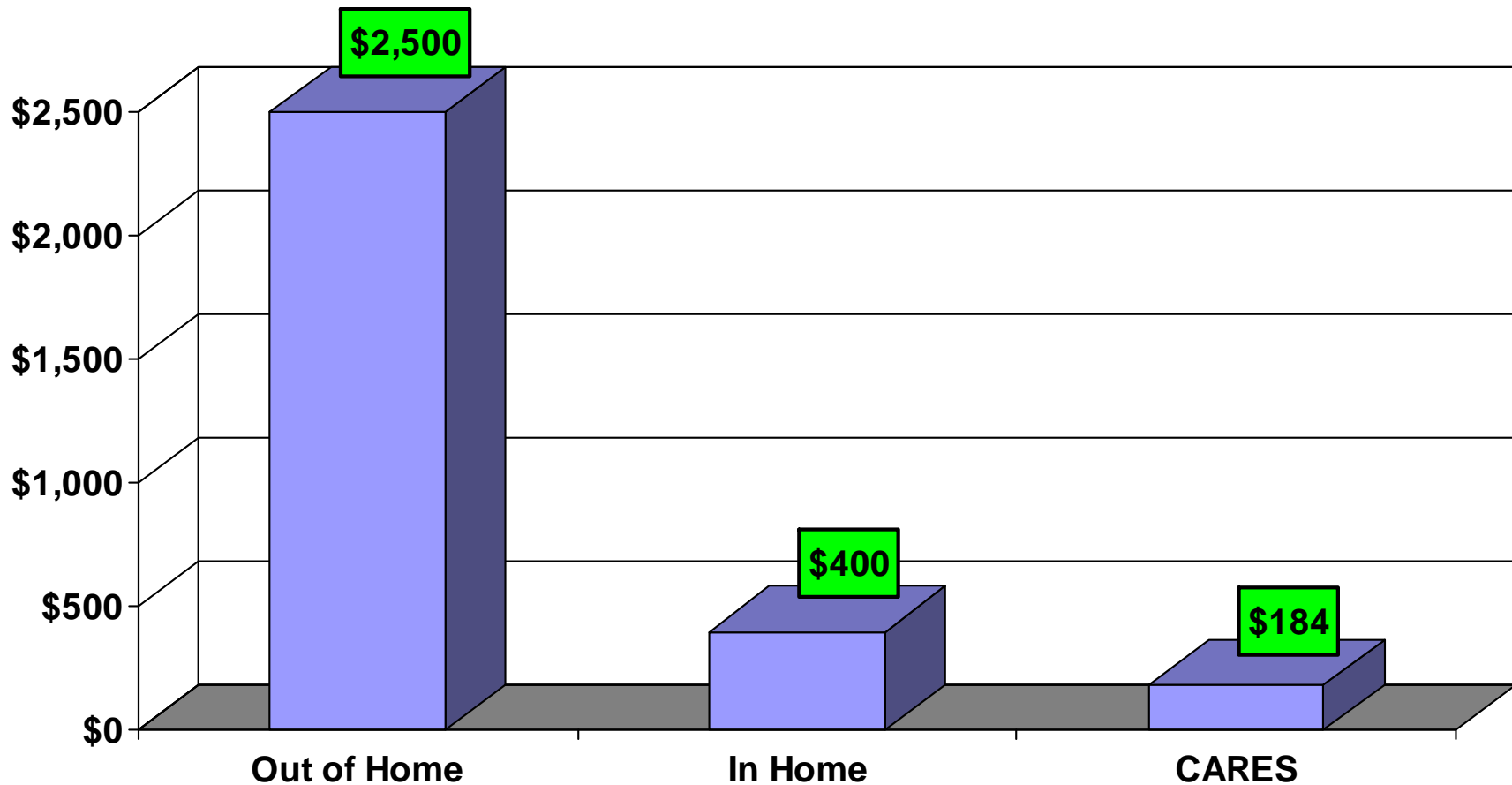
Hotline Reports Received					
Month	FY 04-05 Reports Received	FY 05-06 Reports Received	FY 06-07 Reports Received	FY 07-08 Reports Received	FY 08-09 Reports Received
July	473	600	517	598	530
August	444	705	601	587	507
September	405	656	633	560	604
October	544	598	683	696	622
November	530	639	628	574	540
December	490	474	589	576	487
January	638	606	716	603	614
February	634	532	583	660	533
March	645	654	674	637	618
April	683	643	745	645	550
May	676	661	676	650	554
June	560	505	633	552	526
Total	6722	7273	7678	7338	6685



Program Trends....

- As prevention and community based efforts increase, children entering out-of-home care has decreased.
- Funds that would have previously been spent on Out of Home Care are reinvested in front end prevention activities and wraparound FTC.
- The IVE Waiver allows formerly restricted funding to be used flexibly and reinvested in front-end capacity-building and prevention efforts to reach families before stressors reach the threshold of abuse and/or neglect.

BFP Per Child Cost Per Month: Fiscal Year 08-09





Prevention & In Home Cost Comparison

A Minimal Investment to Keep Families Together

- 100 children
\$184 per month = \$220,800
- 500 children
\$184 per month = \$1.1 m
- 1000 children
\$184 per month = \$2.2 m

- 100 children
\$400 per month = \$480,000
- 500 children
\$400 per month = \$2.4 m
- 1000 children
\$400 per month = \$4.8 m

n = cost x 12 months



Prevention & OOHC Cost Comparison

A Minimal Investment to Keep Families Together

- 100 children
\$184 per month= \$220,800
- 500 children
\$184 per month= \$1.1 million
- 1000 children
\$184 per month= \$2.2 million

- 100 children
\$2,500 per month= \$3 million
- 500 children
\$2,500 per month= \$15 million
- 1000 children
\$2,500 per month= \$30 million



Cost Analysis Sample: Placement Only

Per Child Daily Rate

- \$20 a day
- \$50 a day
- \$100 a day
- \$200 a day
- \$300 a day

Per Child Annual

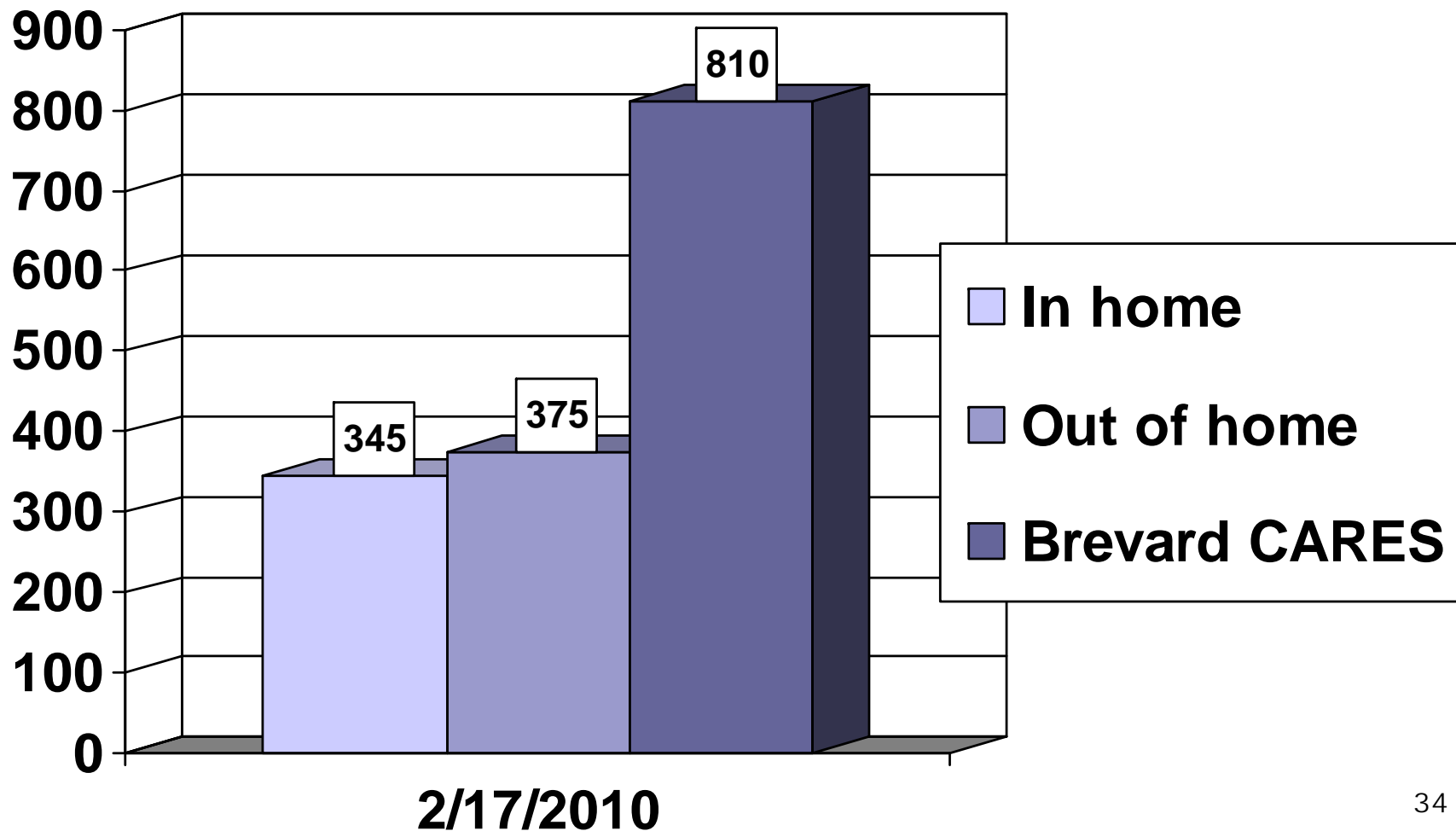
- \$7,300 a year
- \$18,250 a year
- \$36,500 a year
- \$73,000 a year
- \$109,500 a year

Formerly restricted funds from OOHC can and should be earmarked to enhance prevention efforts, community based and in home services and capacity building activities.

Potential Costs Without the IVE Waiver & Front End Prevention Programs

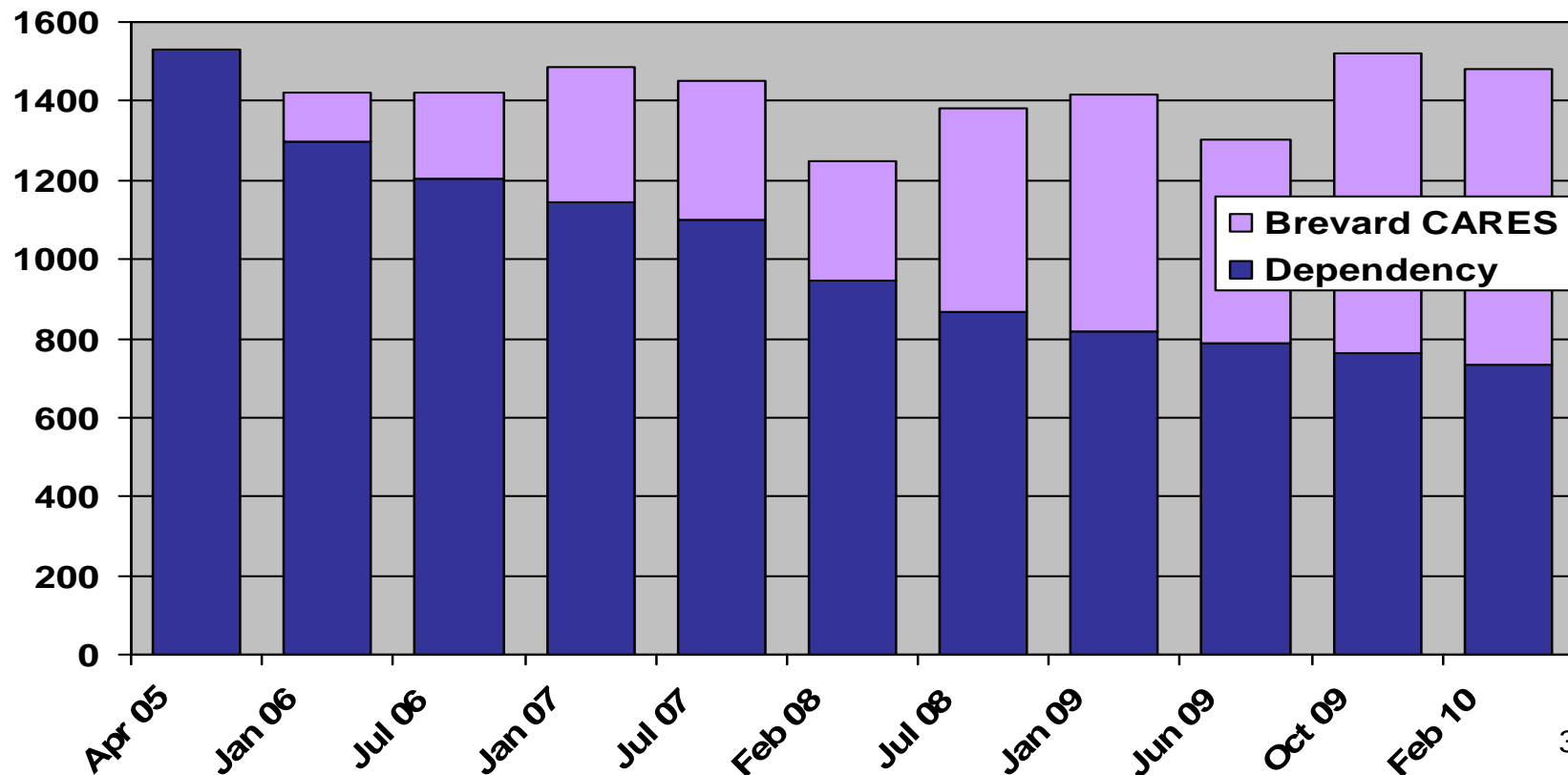
Fiscal Year	Number of Children Served in C.A.R.E.S	Days of Service	Cost of Foster Care & CPA Per Day	Total Potential Costs Pre-transition/Prewaiver
Aug 05-06	521	167	\$40	3.48 million
Aug 06-07	920	167	\$40	6.1 million
Aug 07-08	1,530	167	\$40	10.2 million
Aug 08- May 09	1,810	167	\$40	12. million
Total	4,781	167 days	\$40	31.9 million

Children Receiving Services From CBCB by Type of Service



BFP's Reduction of Children in Care

The number of children in care pre-transition averaged 1,500 for the 4 years prior to privatization. Hotline calls have remained fluid over the past 4.5 years, yet following the implementation and capacity building of C.A.R.E.S, the census of children in care has gradually declined to coincide with the increasing capacity of C.A.R.E.S.





Innovations

- Wraparound Training Institute and Certification
- Mindshare Technology Trend Analysis System
- Flexible Supports & Unbundling Services
- Brevard C.A.R.E.S. & EBP Validation Study
- CAFAS & Continuum of Care
- Colocation: Healthy Start, DV and SA Specialists
- DBT
- PLL
- MRT



Innovations

- Operation Full Employment & Fast Track GED
- Center For Community Leadership Event
- Interfaith Coalition
- Group Care Certification: Competent Youth Work
- Alumni Groups: C.A.R.E.S.
- Suboxone Drug Treatment Program



Capacity Building: 2005-2006

- ♥ Welcome Center
- ♥ MRT
- ♥ Family Residence
- ♥ DBT
- ♥ Family Style Group Homes
- ♥ Flexible Supports: Unbundling Services



Capacity Building 2006-2007

- ♥ B.O.A.T.
- ♥ Hidden Potentials
- ♥ Space Coast Counseling Center
- ♥ Center for Life Enhancement
- ♥ Supportive Counseling
- ♥ Brevard Psychology and Learning Center
- ♥ Jennings Applied Behavior and Cognitive Center
- ♥ Adult and Child Counseling and Psychiatric Center
- ♥ CHANGES
- ♥ Open Door International
- ♥ One Haven Home
- ♥ Boys Unlimited, Inc.
- ♥ Paradise Haven
- ♥ Devereux Family Residence



Capacity Building 2007-2008

- ♥ Faith Based Initiative
- ♥ Alternate Family Care Child Placing Agency
- ♥ Royal Priesthood Residential Group Home
- ♥ Lighthouse Mentoring Group
- ♥ Family Enhancement Services
- ♥ Center for Drug-Free Living



Capacity Building 2008-2009

- ♥ Expansion of Brevard C.A.R.E.S
- ♥ Domestic Violence Specialists at CC's
- ♥ Substance Abuse Specialists at CC's
- ♥ Kids Peace Child Placing Agency
- ♥ IL School Guidance Counselor



Capacity Building 2009-2010

- ♥ Grant Funded EBP Prevention Programs
- ♥ Parenting With Love and Limits
- ♥ Project Success
- ♥ Brevard C.A.R.E.S.
- ♥ Academy of Competent Youth Work Certification
- ♥ Therapeutic Visitation
- ♥ Hiring of two IL Youth Advocates
- ♥ Suboxone Treatment Program
- ♥ Mindshare Technology